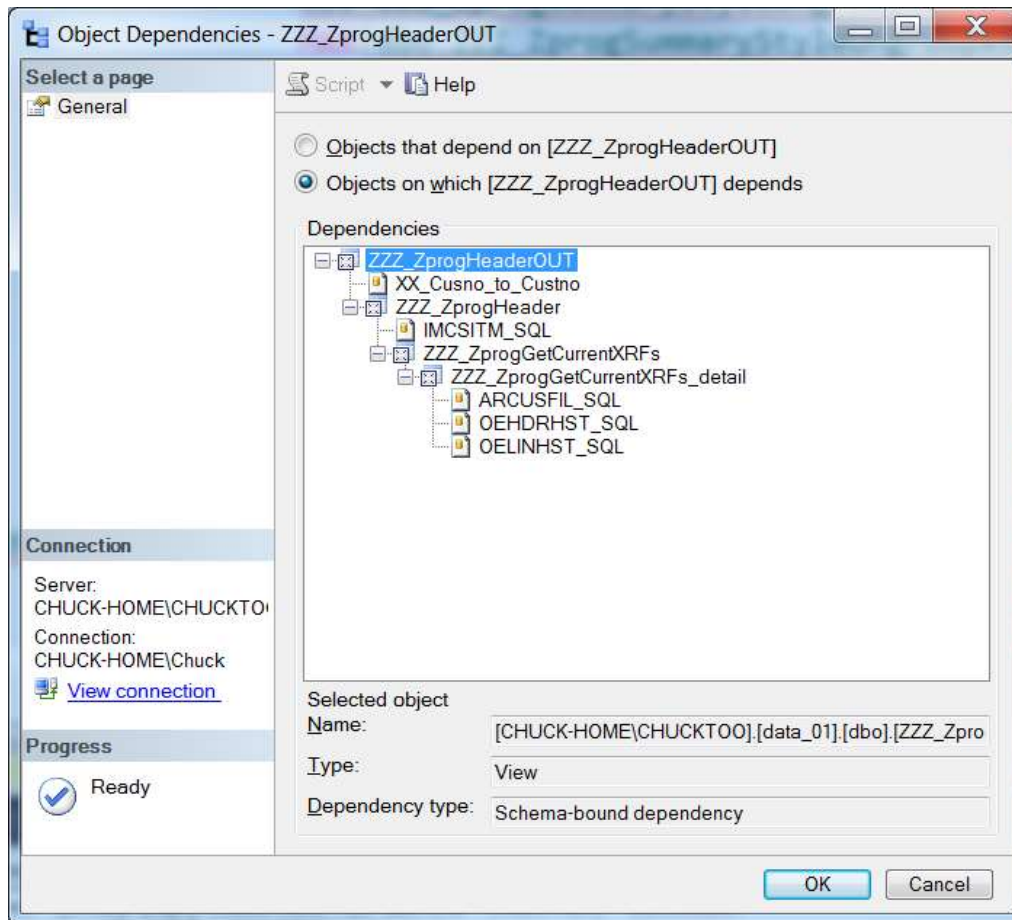


Queries Created by Chuck Stoops

This series of queries (actually these are views) converts fields for customer specific groupings of merchandise from SQL to a format for import into another database. There are two series of queries: one for the *Header Information* and one for the *Detail*, by item, information. The *Header Information* is outlined below.

The screen shot below shows the dependencies of the final query: ZZZ_ZprogHeaderOUT:



First Query **ZZZ_ZprogGetCurrentXRFs_detail**: From the Order History Header and Line Item Tables find items by customer grouping (item_case_no), determine for each item/grouping the date first sold and the date last sold. Filter out invoices older than 1/1/2008. (This query is also used by other queries to determine the final item detail query.)

```
SELECT dbo.OEHRHST_SQL.cus_no, RTRIM(dbo.OELINHST_SQL.line_item_case_no) AS line_item_case_no, dbo.OEHRHST_SQL.inv_dt AS MaxInvDt,
       dbo.OEHRHST_SQL.inv_dt AS MinInvDt, LEFT(dbo.ARCUSFIL_SQL.user_def_fld_1, 1) AS skuBySize
FROM   dbo.ARCUSFIL_SQL RIGHT OUTER JOIN
       dbo.OEHRHST_SQL ON dbo.ARCUSFIL_SQL.cus_no = dbo.OEHRHST_SQL.cus_no RIGHT OUTER JOIN
       dbo.OELINHST_SQL ON dbo.OEHRHST_SQL.ord_no = dbo.OELINHST_SQL.ord_no AND dbo.OEHRHST_SQL.inv_no = dbo.OELINHST_SQL.inv_no
WHERE  (dbo.OEHRHST_SQL.inv_dt > 20080000) AND (dbo.OEHRHST_SQL.cus_no IS NOT NULL) AND (RTRIM(dbo.OELINHST_SQL.line_item_case_no) IS NOT NULL)
```

Second Query **ZZZ_ZprogGetCurrentXRFs**: Determine date first sold and the date last sold by groupings of merchandise:

```
SELECT TOP (100) PERCENT cus_no, RTRIM(line_item_case_no) AS line_item_case_no, skuBySize, MAX(MaxInvDt) AS MaxInvDt, MIN(MinInvDt) AS MinInvDt
FROM   dbo.ZZZ_ZprogGetCurrentXRFs_detail
GROUP BY cus_no, skuBySize, RTRIM(line_item_case_no)
```

Third Query **ZZZ_ZprogHeader**: Lookup additional fields from the other tables needed for the conversion.

```
SELECT dbo.ZZZ_ZprogGetCurrentXRFs.cus_no, dbo.ZZZ_ZprogGetCurrentXRFs.line_item_case_no AS ProgID, MAX(dbo.IMCSITM_SQL.cstitm_user_field1) AS
ProgName,
       MIN(dbo.ZZZ_ZprogGetCurrentXRFs.MinInvDt) AS [created date], CASE WHEN MAX(dbo.ZZZ_ZprogGetCurrentXRFs.MaxInvDt) > 20101231
THEN 'Y' ELSE 'N' END AS StatusF1,
       MAX(dbo.ZZZ_ZprogGetCurrentXRFs.MaxInvDt) AS NoteLn1, RTRIM(MAX(dbo.ZZZ_ZprogGetCurrentXRFs.cus_no)) AS NoteLn2, '' AS NoteLn3,
'' AS NoteLn4, NULL
       AS NoteLn5, '' AS NoteLn6, NULL AS NoteLn7, '' AS NoteLn8, '' AS NoteLn9, '' AS NoteLn10, '' AS NoteLn11, '' AS NoteLn12, '' AS
NoteLn13, NULL AS NoteLn14, '' AS NoteLn15,
       '' AS NoteLn16, CASE WHEN MAX(dbo.ARCUSFIL_SQL.user_def_fld_1) = 'Y' THEN 'E' ELSE 'S' END AS rptType, CASE WHEN
MAX(dbo.ARCUSFIL_SQL.user_def_fld_1)
       = 'Y' THEN 'E' ELSE 'S' END AS invrpttype, CASE WHEN MAX(dbo.ARCUSFIL_SQL.user_def_fld_1) = 'Y' THEN 'Y' ELSE 'N' END AS
upcBySize, 'Y' AS printEnvF1
FROM   dbo.ZZZ_ZprogGetCurrentXRFs LEFT OUTER JOIN
       dbo.ARCUSFIL_SQL ON dbo.ZZZ_ZprogGetCurrentXRFs.cus_no = dbo.ARCUSFIL_SQL.cus_no LEFT OUTER JOIN
```

```

        dbo.IMCSITM_SQL ON dbo.ZZZ_ZprogGetCurrentXRFS.line_item_case_no = dbo.IMCSITM_SQL.cust_display_no AND
        dbo.ZZZ_ZprogGetCurrentXRFS.cus_no = dbo.IMCSITM_SQL.cust_no
GROUP BY dbo.ZZZ_ZprogGetCurrentXRFS.line_item_case_no, dbo.ZZZ_ZprogGetCurrentXRFS.cus_no

```

Fourth: **ZZZ_ZprogHeaderOUT_SQL**: This the final output. Structure the data identical to the mapping of the indented table to be populated.

```

SELECT      dbo.ZZZ_ZprogSummaryStyleUngrouped.custno, ISNULL(dbo.ZZZ_ZprogSummaryStyleUngrouped.ShipTo, '') AS SHIPTO,
            dbo.ZZZ_ZprogSummaryStyleUngrouped.progid, RTRIM(ISNULL(dbo.XX_CustrefRenum.NewCustref,
            dbo.ZZZ_ZprogSummaryStyleUngrouped.CustRef)) AS CustRef,
            dbo.ZZZ_ZprogSummaryStyleUngrouped.Prod, MIN(dbo.ZZZ_ZprogSummaryStyleUngrouped.AddedDtStr) AS
AddDtStr,
            MIN(dbo.ZZZ_ZprogSummaryStyleUngrouped.StatusFl) AS StatusFl,
MAX(dbo.ZZZ_ZprogSummaryStyleUngrouped.CustDesc) AS CustDesc,
            MAX(dbo.ZZZ_ZprogSummaryStyleUngrouped.RetailPrc) AS RetailPrc,
MAX(dbo.ZZZ_ZprogSummaryStyleUngrouped.Price) AS Price,
            dbo.ZZZ_ZprogSummaryStyleUngrouped.custsku, MAX(dbo.ZZZ_ZprogSummaryStyleUngrouped.sizesku1) AS
sizesku1,
            MAX(dbo.ZZZ_ZprogSummaryStyleUngrouped.sizesku2) AS sizesku2,
MAX(dbo.ZZZ_ZprogSummaryStyleUngrouped.sizesku3) AS sizesku3,
            MAX(dbo.ZZZ_ZprogSummaryStyleUngrouped.sizesku4) AS sizesku4,
MAX(dbo.ZZZ_ZprogSummaryStyleUngrouped.sizesku5) AS sizesku5,
            MAX(dbo.ZZZ_ZprogSummaryStyleUngrouped.sizesku6) AS sizesku6,
MAX(dbo.ZZZ_ZprogSummaryStyleUngrouped.sizesku7) AS sizesku7,
            MAX(dbo.ZZZ_ZprogSummaryStyleUngrouped.sizesku8) AS sizesku8,
MAX(dbo.ZZZ_ZprogSummaryStyleUngrouped.sizesku9) AS sizesku9,
            MAX(dbo.ZZZ_ZprogSummaryStyleUngrouped.sizesku10) AS sizesku10,
MAX(dbo.ZZZ_ZprogSummaryStyleUngrouped.sizesku11) AS sizesku11,
            MAX(dbo.ZZZ_ZprogSummaryStyleUngrouped.sizesku12) AS sizesku12,
MAX(dbo.ZZZ_ZprogSummaryStyleUngrouped.sizesku13) AS sizesku13,
            MAX(dbo.ZZZ_ZprogSummaryStyleUngrouped.sizesku14) AS sizesku14,
MAX(dbo.ZZZ_ZprogSummaryStyleUngrouped.sizesku15) AS sizesku15,
            MAX(dbo.ZZZ_ZprogSummaryStyleUngrouped.sizesku16) AS sizesku16
FROM        dbo.ZZZ_ZprogSummaryStyleUngrouped LEFT OUTER JOIN
            dbo.XX_CustrefRenum ON dbo.ZZZ_ZprogSummaryStyleUngrouped.CustRef = dbo.XX_CustrefRenum.custref AND
            dbo.ZZZ_ZprogSummaryStyleUngrouped.Prod = dbo.XX_CustrefRenum.Prod AND

```

```
        dbo.ZZZ_ZprogSummaryStyleUngrouped.progid = dbo.XX_CustrefRenum.progID
GROUP BY dbo.ZZZ_ZprogSummaryStyleUngrouped.custno, ISNULL(dbo.ZZZ_ZprogSummaryStyleUngrouped.ShipTo, ''),
        dbo.ZZZ_ZprogSummaryStyleUngrouped.progid,
        RTRIM(ISNULL(dbo.XX_CustrefRenum.NewCustref, dbo.ZZZ_ZprogSummaryStyleUngrouped.CustRef)),
        dbo.ZZZ_ZprogSummaryStyleUngrouped.Prod,
        dbo.ZZZ_ZprogSummaryStyleUngrouped.custsku
```

Note: I have permission from my previous employer to disclose these queries, but not the underlying data tables.